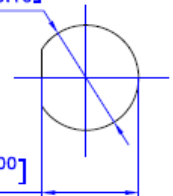


Recommended Panel
Hole dimensions inch[mm]

$\phi.252_0^{+.004}$ [$\phi 6.5_{-0.10}^{+0.05}$]


$\phi.235_0^{+.003}$ [$\phi 6_{-0}^{+.100}$]



Description:

- Frequency range: DC - 40 GHz
- VSWR typical $\leq 1.40 : 1$
- Raw cable Insertion loss: 1.6 dB / ft @ 40 GHz

Standard length tolerance	
L (inches)	Tolerance (inches)
2.0 - 5.9	± 0.125
6 - 11.9	± 0.187
12 - 23.9	± 0.250
24.0 - 35.9	± 0.313
36.0 - 47.9	± 0.375
48.0 - 59.9	± 0.500
60.0 - 71.9	± 0.563
72.0 - 83.9	± 0.625
>83.9	Please contact evissaP

All DIMENSIONS ARE IN INCHES UNLESS OTHERWISE SPECIFIED	SIZE A	SCALE NO	 RF Interconnect Solutions
	REV. A	SHEET 1/1	
CAGE CODE: 4K GK3	Title: eP5161R		Title: SMP Female R/A to 2.92mm Bulkhead, 085 conformable

Contact us:
E-mail: sales@evissap.com

Sample test data for 12" eP5161R Cable

