

### Electrical

Impedance: 50 Ohms

Frequency: DC - 27 GHz

VSWR: 1.30 : 1 typical Max.

Insertion loss:  $0.03 \cdot \text{SQRT}(\text{frequency in GHz})$

### Mechanical (Typical)

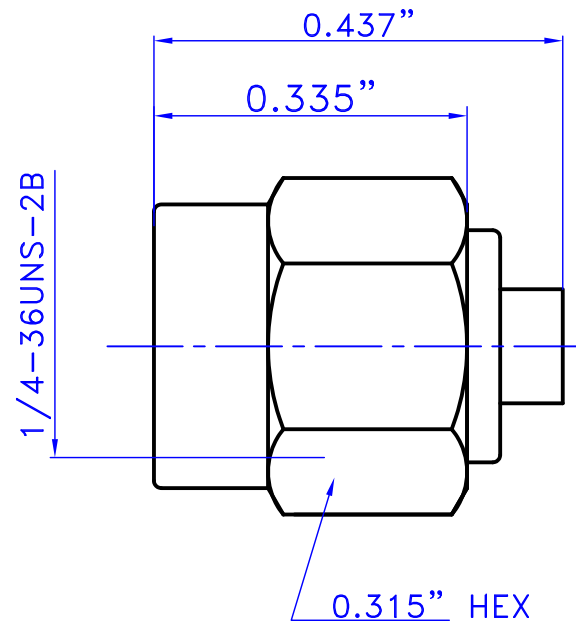
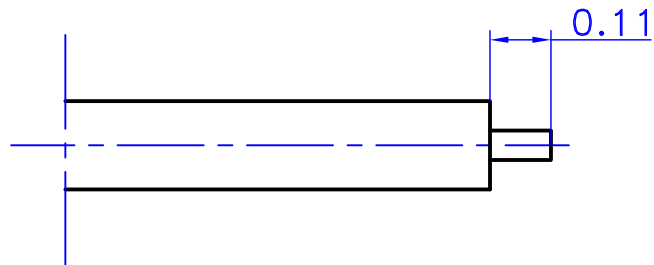
1) Connector Durability: 500 matings

2) Mates with MIL-STD-348

3) Temperature range:  $-65^{\circ}\text{C}$  to  $+165^{\circ}\text{C}$

MATERIALS		
	Materials	Finishing
Coupling Nut	Stainless Steel	Passivated
Body	Brass	Gold over Nickel
Center conductor	brass	Gold over Nickel
Insulator	PTFE	None
Gasket	Silicone rubber	None

cable strip dimensions



SIZE A	SCALE NO	All dimension are in inches unless otherwise specified	 RF Interconnect Solutions
REV. A	SHEET 1/1		
PART NO. 131-21-21-001		TITLE SMA staight male for RG-405	